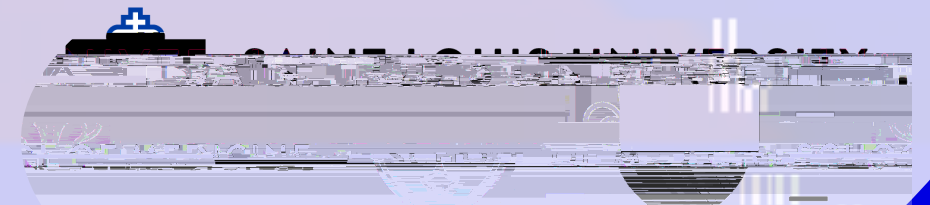




- Introduction and Comments
- Myths about COVID-19 Vaccine
- Q&A
- Closing Remarks





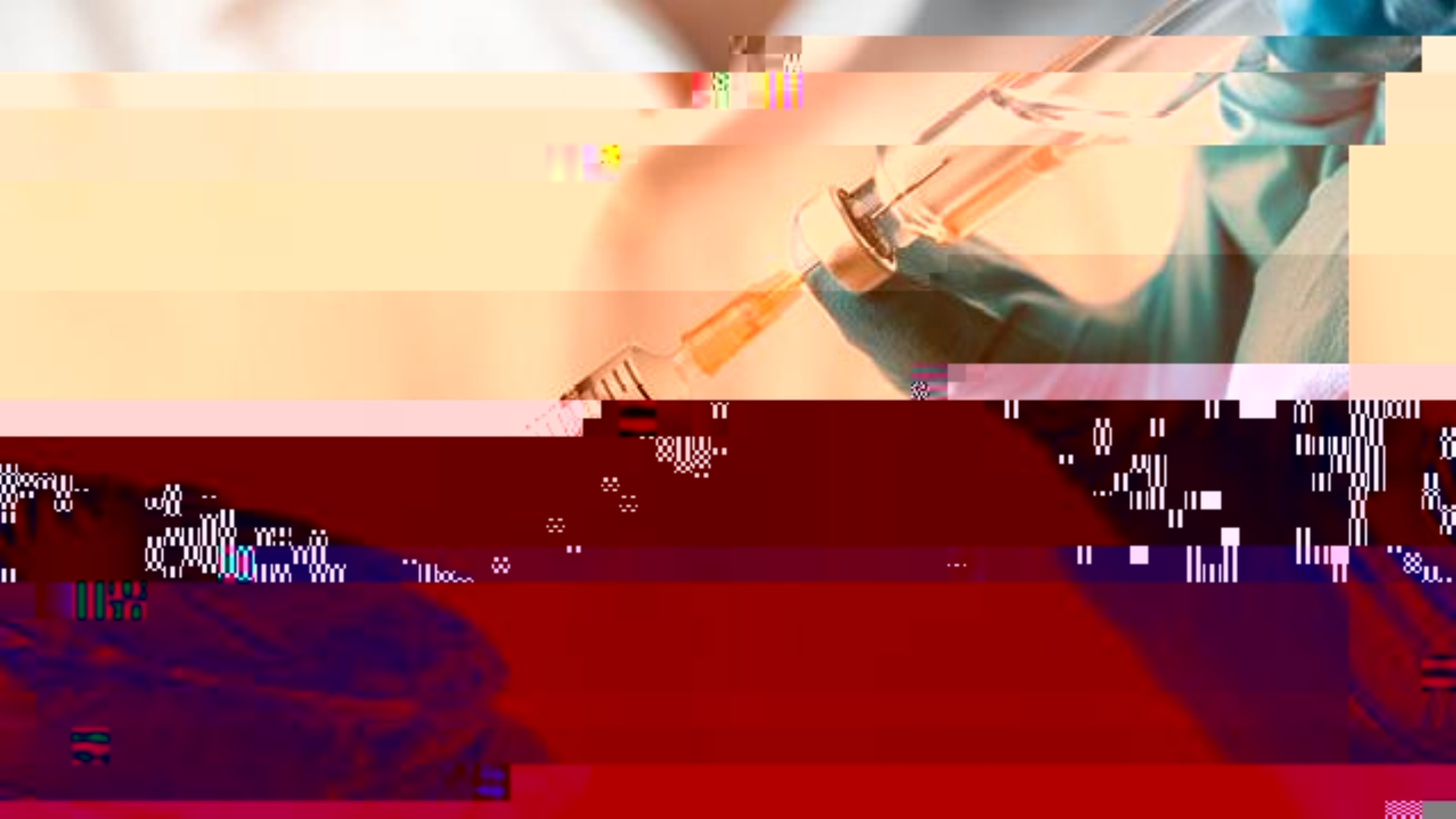
You shouldn't postpone your vaccinations.

Submit question in the Q & A feature



The technology used to develop the new COVID-19 vaccines is not new.

Submit question in the Q & A feature





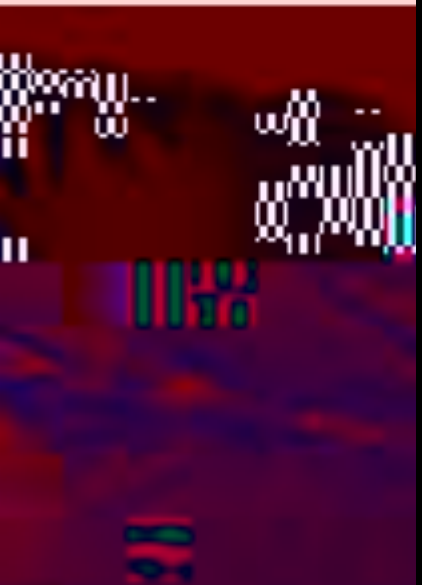
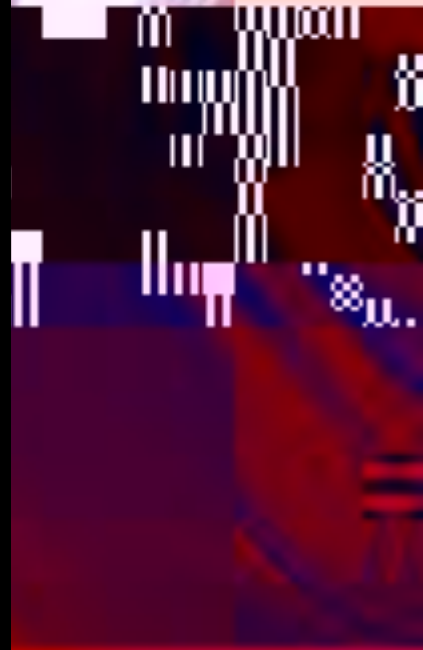
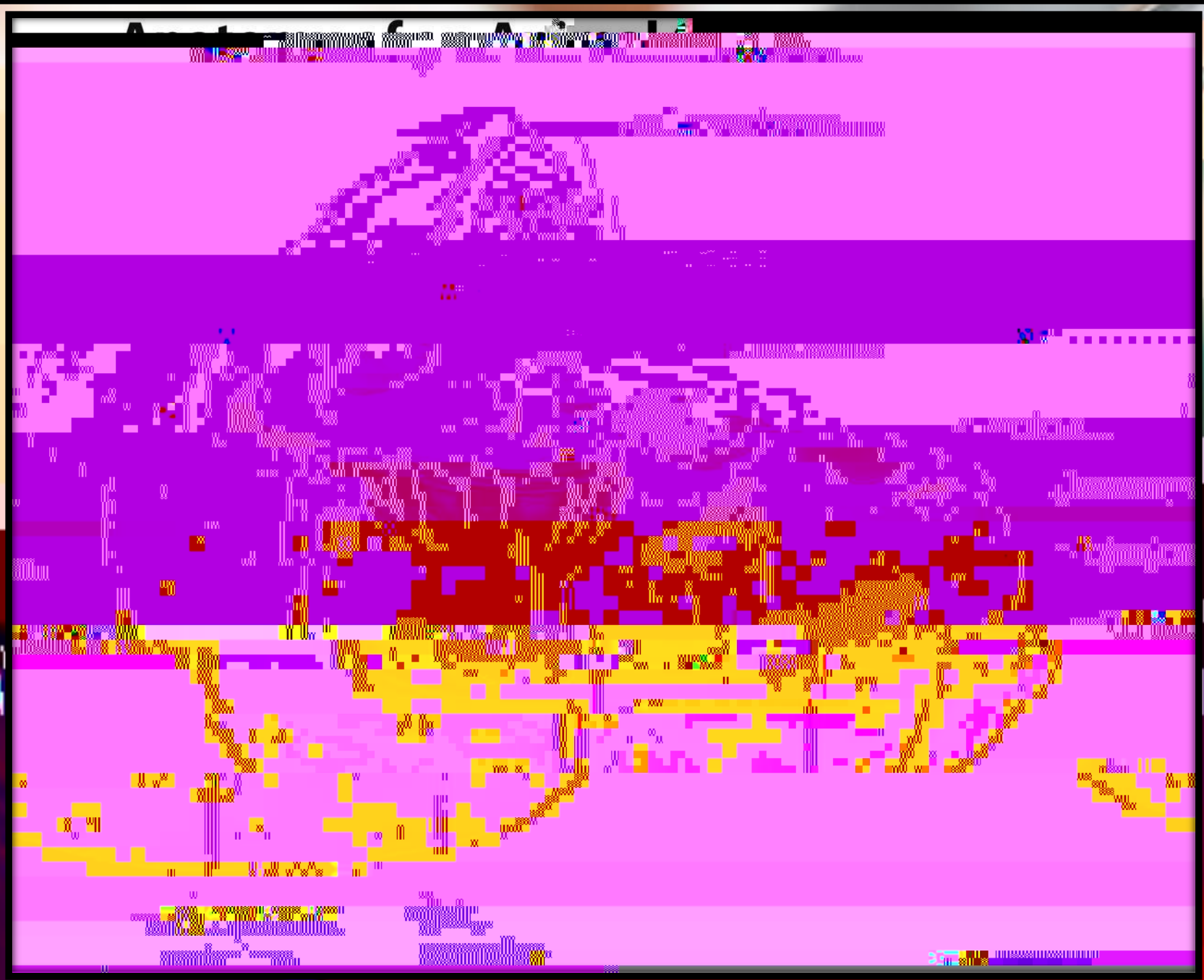




This is not possible. Messenger RNA (mRNA) vaccines work in the cell's cytoplasm and never enter the cell nucleus, where the DNA, your genetic material, lives.

Submit question in the Q & A feature







All the COVID-19 vaccines being used have gone through rigorous studies to ensure they are as safe as possible. Systems that allow CDC to watch for safety issues are in place across the entire country.

Submit question in the Q & A feature



You may have pain and swelling at the injection site and experience fever, chills, tiredness, and headache. Side effects may feel like flu and even affect your ability to do daily activities, but they should go away in a few days.

Submit question in the Q & A feature





No, the COVID-19 vaccines do not contain any aborted fetal cells. However, Pfizer and Moderna did perform confirmation tests (to ensure the vaccines work) using fetal cell lines. Fetal cell lines are not the same as fetal tissue. Fetal cell lines are cells that grow in a laboratory. They descend from cells taken from elective abortions in the 1970s and 1980s. No fetal cell lines were used to manufacture the vaccine, and they are not inside the injection you receive.

Submit question in the Q & A feature





It typically takes a few weeks for the body to build immunity (protection against the virus that causes COVID-19) after vaccination. That means it's possible a person could be infected with the virus that causes COVID-19 just before or just after vaccination and still get sick.

Submit question in the Q & A feature







Eschatology is the part of theology concerned with death, judgment, and the final destiny of the soul and of humankind. Many within the religious community believe that a global vaccination leads us one step closer to a one-world government.

Submit question in the Q & A feature



According to the bible the mark of the beast is a number. Receiving this vaccine does not equate to accepting the mark of the beast.

Submit question in the Q & A feature



Pastor Charles Norris' comments

Submit question in the Q & A feature





Visit [MOSTopsCOVID.com](https://www.mostopsCOVID.com) to find out when you are eligible to receive the vaccine and locations offering vaccinations. In the St. Louis area, selected health care systems include BJC Healthcare, SSM Health, Mercy St. Louis, St. Luke's Hospital and the St. Louis County Health Department.

Submit question in the Q & A feature



<https://covidvaccine.mo.gov/residents/>

### Phase 1B – Tier 1

Protecting those who keep the

essential functions of society running

Businesses

Children

Minimum critical infrastructure

Dams Sector

Corrections

Emergency Management

Public Works

### Phase 1B – Tier 2

Protecting those who keep us safe

and help during an emergency

Public Health Administrators and

Staff

Fire Services

• COPD

• Heart Conditions

• Weakened immune system due

### Phase 1B – Tier 3

Protecting those who

increased risk for severe illness

Anyone 65 and older

Any adult with:

• Cancer

• Chronic Kidney

Energy Sector

Food & Agriculture Sector 1

Government





